

6

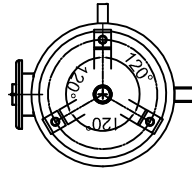
5

4

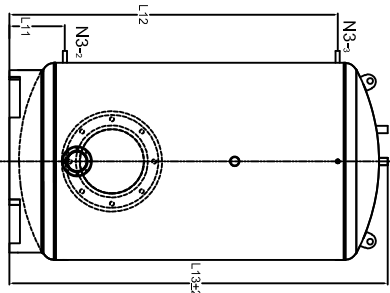
3

2

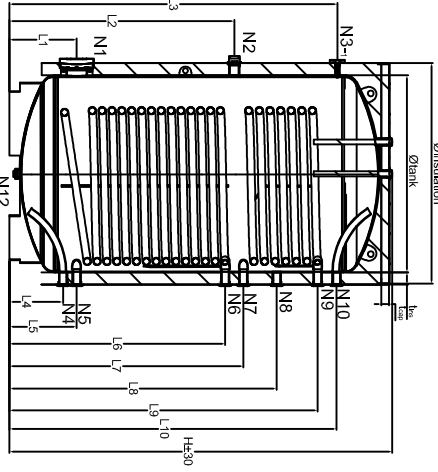
1



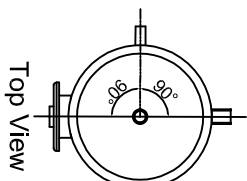
Bottom View



Front View



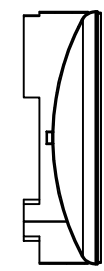
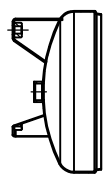
C-C



Top View

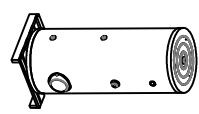
| REV. NO | REV. | TANIM       | TARH       | DNAY |
|---------|------|-------------|------------|------|
| 01      | A    | REVIZYONLAR | 03.02.2020 |      |

Dimensions are updated. Weights and heat exchanger surface area information are added.



Three-legged for 800, 1000 and 1500 L.

Circular leg for 2000, 2500, and 3000 L.



Isometric View for 800, 1000, 1500 L.

Isometric View for 2000-3000 L.

| N CODE | DESCRIPTION                       | 150    | 200    | 300    | 500    | 800    | 1000   | 1300   | 1500   | 2000   | 2500   | 3000   |
|--------|-----------------------------------|--------|--------|--------|--------|--------|--------|--------|--------|--------|--------|--------|
| N1     | Drainage Control Flange           | 4"     | 4"     | 4"     | 5"     | 5"     | 5"     | 5"     | 5"     | 5"     | 5"     | 5"     |
| N2     | Pressure Relief Valve             | 1 1/2" | 1 1/2" | 1 1/2" | 1 1/2" | 1 1/2" | 1 1/2" | 1 1/2" | 1 1/2" | 1 1/2" | 1 1/2" | 1 1/2" |
| N3.1   | Thermometer and Sensor Connection | 1/2"   | 1/2"   | 1/2"   | 1/2"   | 1/2"   | 1/2"   | 1/2"   | 1/2"   | 1/2"   | 1/2"   | 1/2"   |
| N3.2   | Thermometer and Sensor Connection | 1/2"   | 1/2"   | 1/2"   | 1/2"   | 1/2"   | 1/2"   | 1/2"   | 1/2"   | 1/2"   | 1/2"   | 1/2"   |
| N3.3   | Thermometer and Sensor Connection | 1/2"   | 1/2"   | 1/2"   | 1/2"   | 1/2"   | 1/2"   | 1/2"   | 1/2"   | 1/2"   | 1/2"   | 1/2"   |
| N4     | Pressure Control Valve            | 1"     | 1"     | 1"     | 1"     | 1"     | 1"     | 1"     | 1"     | 1"     | 1"     | 1"     |
| N5     | Pressure Control Valve            | 1 1/2" | 1 1/2" | 1 1/2" | 1 1/2" | 1 1/2" | 1 1/2" | 1 1/2" | 1 1/2" | 1 1/2" | 1 1/2" | 1 1/2" |
| N6     | Pressure Control Valve            | 1 1/2" | 1 1/2" | 1 1/2" | 1 1/2" | 1 1/2" | 1 1/2" | 1 1/2" | 1 1/2" | 1 1/2" | 1 1/2" | 1 1/2" |
| N7     | Pressure Control Valve            | 1 1/2" | 1 1/2" | 1 1/2" | 1 1/2" | 1 1/2" | 1 1/2" | 1 1/2" | 1 1/2" | 1 1/2" | 1 1/2" | 1 1/2" |
| N8     | Pressure Control Valve            | 1 1/2" | 1 1/2" | 1 1/2" | 1 1/2" | 1 1/2" | 1 1/2" | 1 1/2" | 1 1/2" | 1 1/2" | 1 1/2" | 1 1/2" |
| N9     | Pressure Control Valve            | 1 1/2" | 1 1/2" | 1 1/2" | 1 1/2" | 1 1/2" | 1 1/2" | 1 1/2" | 1 1/2" | 1 1/2" | 1 1/2" | 1 1/2" |
| N10    | Pressure Control Valve            | 1 1/2" | 1 1/2" | 1 1/2" | 1 1/2" | 1 1/2" | 1 1/2" | 1 1/2" | 1 1/2" | 1 1/2" | 1 1/2" | 1 1/2" |
| N11.1  | Pressure Control Valve            | 1 1/2" | 1 1/2" | 1 1/2" | 1 1/2" | 1 1/2" | 1 1/2" | 1 1/2" | 1 1/2" | 1 1/2" | 1 1/2" | 1 1/2" |
| N11.2  | Pressure Control Valve            | 1 1/2" | 1 1/2" | 1 1/2" | 1 1/2" | 1 1/2" | 1 1/2" | 1 1/2" | 1 1/2" | 1 1/2" | 1 1/2" | 1 1/2" |
| N12    | Pressure Control Valve            | 1 1/2" | 1 1/2" | 1 1/2" | 1 1/2" | 1 1/2" | 1 1/2" | 1 1/2" | 1 1/2" | 1 1/2" | 1 1/2" | 1 1/2" |

DOUBLE SERPENTINE WATER HEATER DIMENSIONS

| Height | drain | Insulation | Top (mm) | Top (mm) | Range | L   | L2  | L3   | L4   | L5  | L6  | L7   | L8   | L9   | L10  | L11  | L12 | L13  | H    | Insulation Weight (kg) |     |
|--------|-------|------------|----------|----------|-------|-----|-----|------|------|-----|-----|------|------|------|------|------|-----|------|------|------------------------|-----|
| 800    | Ø730  | ISO        | 80       | 5"       | 16"   | 440 | 580 | 1130 | 1700 | 340 | 430 | 1080 | 1180 | 1330 | 1550 | 1750 | 335 | 1730 | 2090 | 2110                   | 157 |
| 1000   | Ø850  | ISO        | 80       | 5"       | 16"   | 470 | 610 | 1145 | 1610 | 370 | 460 | 1100 | 1190 | 1335 | 1560 | 1655 | 370 | 1655 | 2030 | 2070                   | 165 |
| 1500   | Ø950  | ISO        | 100      | 5"       | 16"   | 440 | 580 | 1240 | 1990 | 345 | 435 | 1145 | 1305 | 1455 | 1605 | 1690 | 345 | 1590 | 2350 | 2375                   | 177 |
| 2000   | Ø1100 | ISO        | 100      | 5"       | 16"   | 535 | 675 | 1355 | 1850 | 440 | 520 | 1300 | 1400 | 1550 | 1750 | 1845 | 525 | 1850 | 2240 | 2280                   | 187 |
| 2500   | Ø1300 | ISO        | 80       | 5"       | 16"   | 490 | 630 | 1385 | 1795 | 395 | 485 | 1325 | 1435 | 1615 | 1785 | 1890 | 385 | 1795 | 2130 | 2160                   | 187 |
| 3000   | Ø1300 | ISO        | 80       | 5"       | 16"   | 490 | 630 | 1530 | 2025 | 400 | 490 | 1470 | 1590 | 1810 | 2085 | 2205 | 400 | 2205 | 2540 | 2580                   | 187 |

| Genel Toleranslar - General Tolerances |     | Çizim - Drawn By     |            | Tolerans - Tolerance                        |  |
|--|-----|----------------------|------------|---|--|
| Uzunluk Ölçüleri - Linear Dimensions   | ±10 | Kontrol-Check By     | A. ORAK    | General Tolerance Table                     |  |
| 1 up to 400                            | ±10 | Resim No - Draw No   | 000031A1   |   |  |
| 400 up to 1000                         | ±15 | Ürün No - Product No | 830        |   |  |
| 1000 up to 5000                        | ±20 | Malzeme - Material   |            |   |  |
|  |     | Ağırlık - Weight     |            |   |  |
|  |     | Yatırım - Date       | 06.12.2019 |   |  |
|  |     | Sayfa-Sheet          | A4         | Referans Doküman No - Reference Document No |  |
|  |     | dişek - Scale        | A4         | KODSAN                                      |  |

BU RESMIN BÖTÜN HAKLARI KODSAN A.Ş. AİTTİR. TAKLİT EDİLEMEZ. İZİNSİZ ÇÜPAL TILANMAZ. RESİM ÜZERİNDEN ELÇÜ ALMAYINIZ. ALL RIGHTS OF THE DRAWING BELONG TO THE KODSAN WATER HEATER CONSTRUCTION IND. TRADE INC. CANNOT BE COPIED WITHOUT PERMISSION

6

5

4

3

2

1